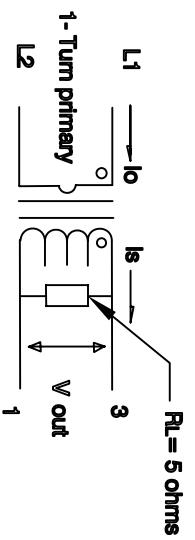
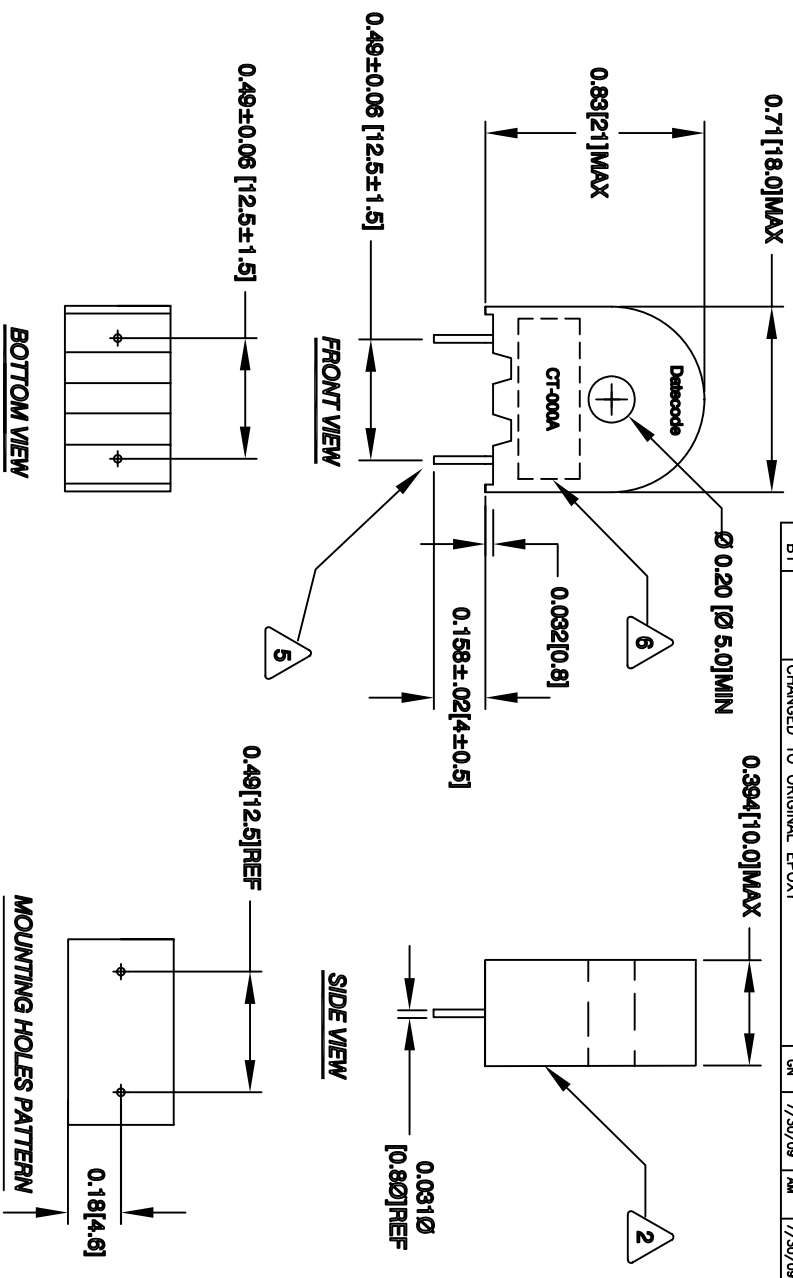


The information contained in this drawing is the sole property of CWS Coil Winding Specialist. Any reproduction in part or whole without written permission of CWS Coil Winding Specialist is prohibited.



- 7 BUILT TO ROHS COMPLIANCE AND LEAD FREE.
- 6 DATE CODE WHERE SHOWN
MARK PART NUMBER, REVISION NUMBER
- 5 REMOVE INSULATION, SOLDERED TO LEADS
- 4 CONSTRUCTION: ENCAPSULATED USING BOBBIN.
 HI-POT VOLTAGE = 2.5 KV/1mA
 OPERATING TEMP. = -25°C TO 125°C
 BURDEN RESISTOR = 5 OHMS REF
 LINEARITY (ACCURACY) = 1% TO RATED CURRENT
 DC RESISTANCE = 40 OHMS MAX
 PRIMARY CURRENT RATING = 25A @ 120 Hz
 TURNS RATIO = 1000 TURNS
 SPECIFICATIONS @ 25 °C :
- 3 WIRE: UL RECOGNIZED 130 °C RATED MAGNET WIRE
 CWS BYTEMARK OR OTHER APPROVED PART
 CORE: TAPE WOUND
- 2 BOBBIN RATING CLASS B (130 °C) (REQUIRED MATERIAL: UL RECOGNIZED 94V-0 FOR FLAMMABILITY)
- 1 NOTES: UNLESS OTHERWISE SPECIFIED, READ FROM BOTTOM UP.
 UNIT: INCHES [MM]



REVISION HISTORY				SIGN & DATE		
REV	ECN	DESCRIPTION	BY	DATE	CHK	DATE
A		PRODUCTION RELEASE	RLU	5/25/04	JLJU	5/25/04
B		CHANGE TO NEW HIGHER TEMPERATURE EPOXY	KJC	8/26/08	GN	8/26/08
B1		CHANGED TO ORIGINAL EPOXY	GN	7/30/09	AM	7/30/09

QTY	CODE IDENT	MFG. P/N	DESCRIPTION	ITEM NO.
			PARTS LIST	
			CT-000A	

AUTOCAD SOLIDWORKS		TITLE:	
SIGN	DATE	High Precision Current Sense Transformer	
RLU	5/25/04	50 Hz to 120 Hz	
JLJU	5/25/04	(Rated Primary Current 25A @ 120 kHz)	
KSUM	5/25/04	SIZE	DWG. NO.
JLJU	5/25/04	B	CT-000A

UNLESS OTHERWISE SPECIFIED	
DIMENSIONING AND TOLERANCE PER ANSI Y14.5M AND [UNITS/METERS]	ALL DIMENSIONS ARE IN INCHES
TOLERANCE INCHES:	Ø = ±0.30'
.XXX±.010 .XX±.020	Ø = ±0.30'
.XXX±.254 .XX±.51	ANGLE PROJECTION
DO NOT SCALE DRAWING	